

MONTHLY MEMBERSHIP PROGRESS REPORT

District 2 S5

Results as of: 5/31/2026

GMT:

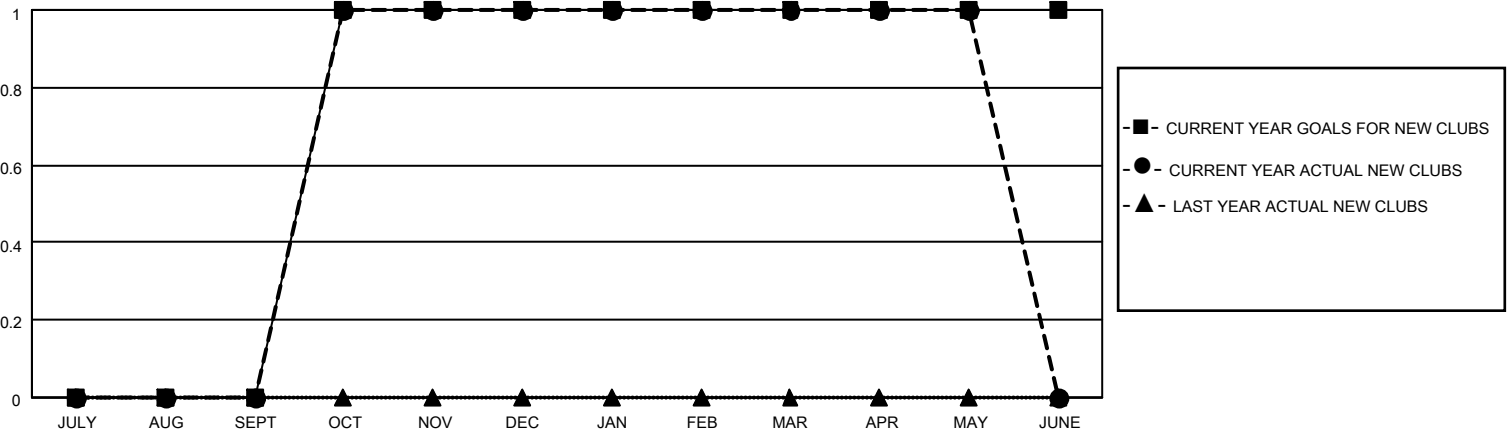
LOCATION TEXAS

GMT CA

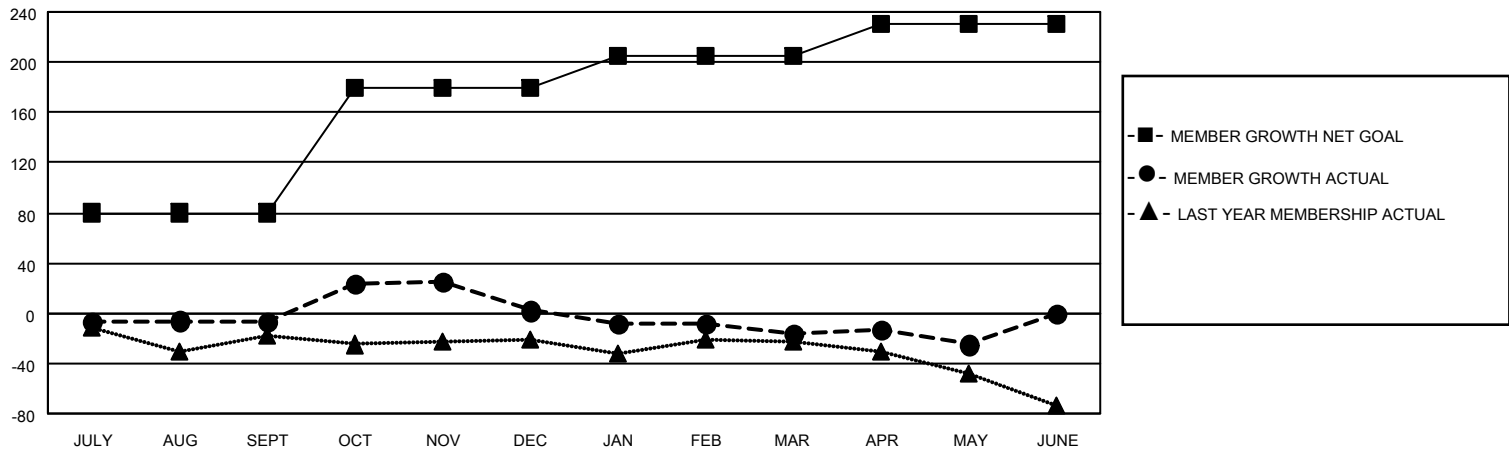
Clubs			
RESULTS FOR 2025-2026			
QUARTER	NEW CLUB GOAL	NEW CLUBS	DROPPED CLUBS
JULY/AUG/SEPT	0	0	0
OCT/NOV/DEC	1	1	1
JAN/FEB/MAR	0	0	1
APR/MAY/JUNE	0	0	0

Members			
RESULTS FOR 2025-2026			
QUARTER	MEMBER GROWTH NET GOAL	MEMBER GROWTH ACTUAL	DROPPED MEMBERS ACTUAL (including transfers)
JULY/AUG/SEPT	80	91	84
OCT/NOV/DEC	100	83	71
JAN/FEB/MAR	25	53	63
APR/MAY/JUNE	25	36	43

GOALS AND ACTUAL NEW CLUBS CUMULATIVE



GOALS AND ACTUAL MEMBERS CUMULATIVE



DROPPED CLUBS: 2

39 CLUBS OF 54 ADDED 1 OR MORE NEW MEMBERS

GENDER DISTRIBUTION

MALE 1,166 (56.91%)
FEMALE 883 (43.09%)

DROPPED MEMBERS

DECEASED	27
CLUB CANCELLED	17
OTHER	217
TOTAL	261

[CLICK HERE FOR CUMULATIVE MEMBERSHIP DATA](#)

TOTAL FAMILY UNIT MEMBERS	388
FAMILY MEMBERS PAYING HALF DUES	197